

# DFS 910/920 EGR Fittings

Updated Feb 4/19

Page.1



## Part# DFS 910-1

Ford EGR Adapter VT 365 International / LT



## Part# DFS 910-2

Ford/Cummins Exhaust Adapter



## Part# DFS 910-20-90 \*NEW\*

Ford/Cummins Exhaust Adapter 90 Degree Fitting



## Part# DFS 910-3

S-Hook Sprayer



## Part# DFS 910-5

Induction Sprayer



## Part# DFS 910-5-1

Induction Sprayer Ford/GM/Dodge - For DFS 920



## Part# DFS 910-5A

Diverter Valve with Quick Connects



**Part# DFS 910-6**  
Duramax EGR Cooler Adapter



**Part# DFS 910-9**  
EGR Manual Opener



**Part# DFS 910-10**  
Isuzu



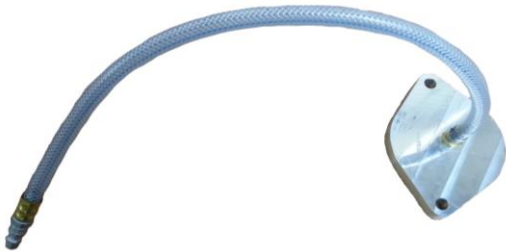
**Part# DFS 910-17**  
Dodge Cummins Adapter from 2007-2010



**Part# DFS 910-17-1**  
Dodge Cummins Adapter from 2007-2010



**Part# DFS 910-18**  
Ford 6.7 Liter (2)



**Part# DFS 910-19**  
Cummins ISX14 2007-2010 Adapter



**Part# DFS 910-19-2**  
Cummins ISX14 2007-2010 Adapter



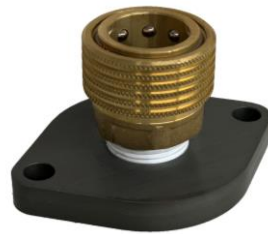
**Part# DFS 910 19-4A \*NEW\***  
Cummins ISX 14 EGR Valve Adapter



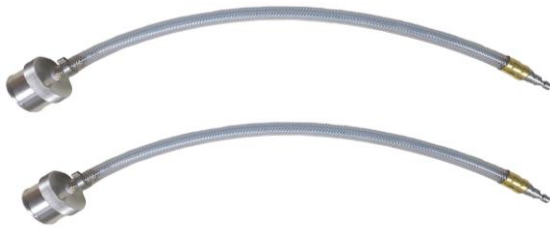
**Part# DFS 910-20**  
Mercedes/Sprinter



**Part# DFS 910-22**  
Cummins ISX15 2011 and newer (2)



**Part# DFS 910-22-1A \*NEW\***  
Cummins ISX 15 EGR Cooler Flush Adapter



**Part# DFS 910-24 \*NEW\***  
Detroit Diesel Series 60 - 1 3/4" Adapter (2)  
Pieces



**Part# DFS 910-24-1 \*NEW\***  
Detroit Diesel Series 60 - 1 1/2" Adapter (2)  
Peices



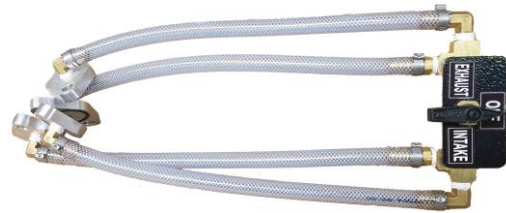
**Part# DFS 910-24-2 \*NEW\***  
Detroit Diesel Series - 1 1/4" Adapter (2) Pieces



**Part# DFS 910-24-3 \*NEW\***  
Detroit Diesel Series - 2" Adapter (2) Pieces



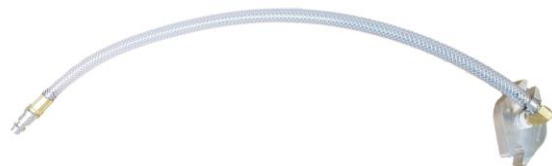
**Part# DFS 910-25**  
Jeep Fitting



**Part# DFS 910-26**  
International



**Part# DFS 910-27**  
Mercedes MBE 900



**Part# DFS 910-27-2**  
Mercedes MBE 900



**Part# DFS 910-28**  
Detroit DD13,15,16



**Part# DFS 910-31**  
Grand Cherokee Jeep and Eco Diesel Truck  
1500



**Part# DFS 910-31-1**  
Grand Cherokee Jeep and Eco Diesel Truck  
1500



**Part# DFS 910-32**  
Mac Volvo



**Part# DFS 910-33**  
Maxforce DT 466



**Part# DFS 910-34 \*NEW\***  
Duramax Diesel 6.6L



**Part# DFS 910-34-1 \*NEW\***  
Duramax Diesel 6.6L



**Part# DFS 910-35 \*NEW\***  
Mercedes Sprinter



**Part# DFS 910-36 \*NEW\***  
Mercedes Sprinter



**Part# DFS 910-37**  
International



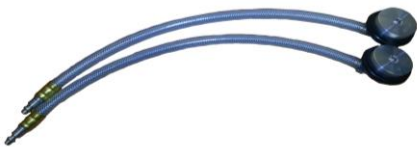
**Part# DFS 910-38 \*NEW\***  
International DDT Maxforce 7.6L (2)



**Part# DFS 910-39 \*NEW\***  
Oval Fitting / Hino Adapter



**Part# DFS 910-40 \*NEW\***  
Hino Adapter



**Part# DFS 910-41 \*NEW\***  
Pacar (2)



**Part# DFS 910-42 \*NEW\***  
Mercedes MBE 4000 2006 and newer



**Part# DFS 910-43 \*NEW\***  
Volkswagen



**Part# DFS 910-43-1 \*NEW\***  
Volkswagen (2)



**Part# DFS 910-44 \*NEW\***  
Cummins Adapter 2 1/4"



**Part# DFS 910-44-1 \*NEW\***  
Cummins Adapter 2"



**Part# DFS 910-45 \*NEW\***  
VW (2)



**Part# DFS 910-45-1 \*NEW\***  
Volvo (2)



**Part# DFS 910-46 \*NEW\***  
Cap, MX 485 HP Paccar



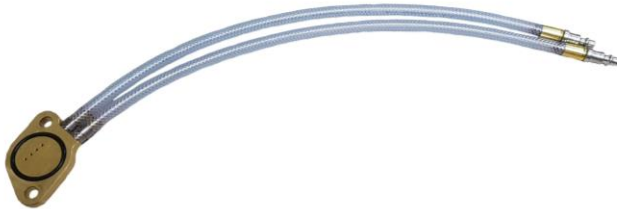
**Part# DFS 910-46-1 \*NEW\***  
Cap, MX 485 HP Paccar



**Part# DFS 910-47 \*NEW\***  
Cap, MX 500 HP Paccar



**Part# DFS 910-47-1 \*NEW\***  
Cap, MX 500 HP Paccar



**Part# DFS 910-48 \*NEW\***  
3.0 Fiat Pro-Master



**Part# DFS 910-50 \*NEW\***  
#102679 - Detroit DD16 - 2016



**Part# DFS 910-51 \*NEW\***  
Cummins EGR Opener



**Part# DFS 910-52 \*NEW\***  
DFS Multi Coupler



**Part# DFS 910-53 \*NEW\***  
EGR Cooler Hose



**Part# DFS 910-M8-1**  
Volvo/Mac EGR Adapter



**Part# DFS 910-M8-2**  
Volvo/Mac EGR Adapter



**Part# DFS 910-M8-3**  
Volvo/Mac EGR Adapter