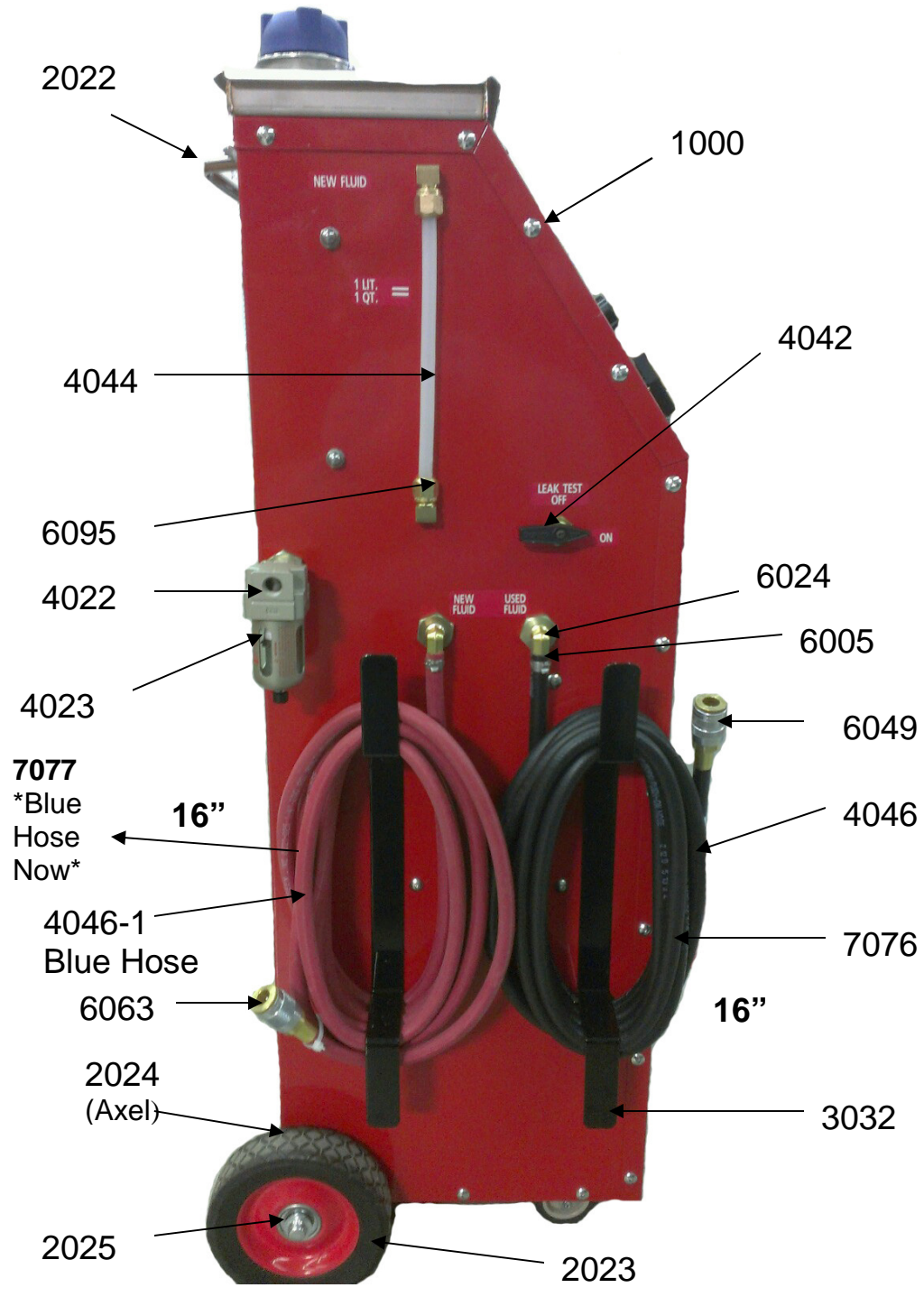


# BFS 115







4002

3047

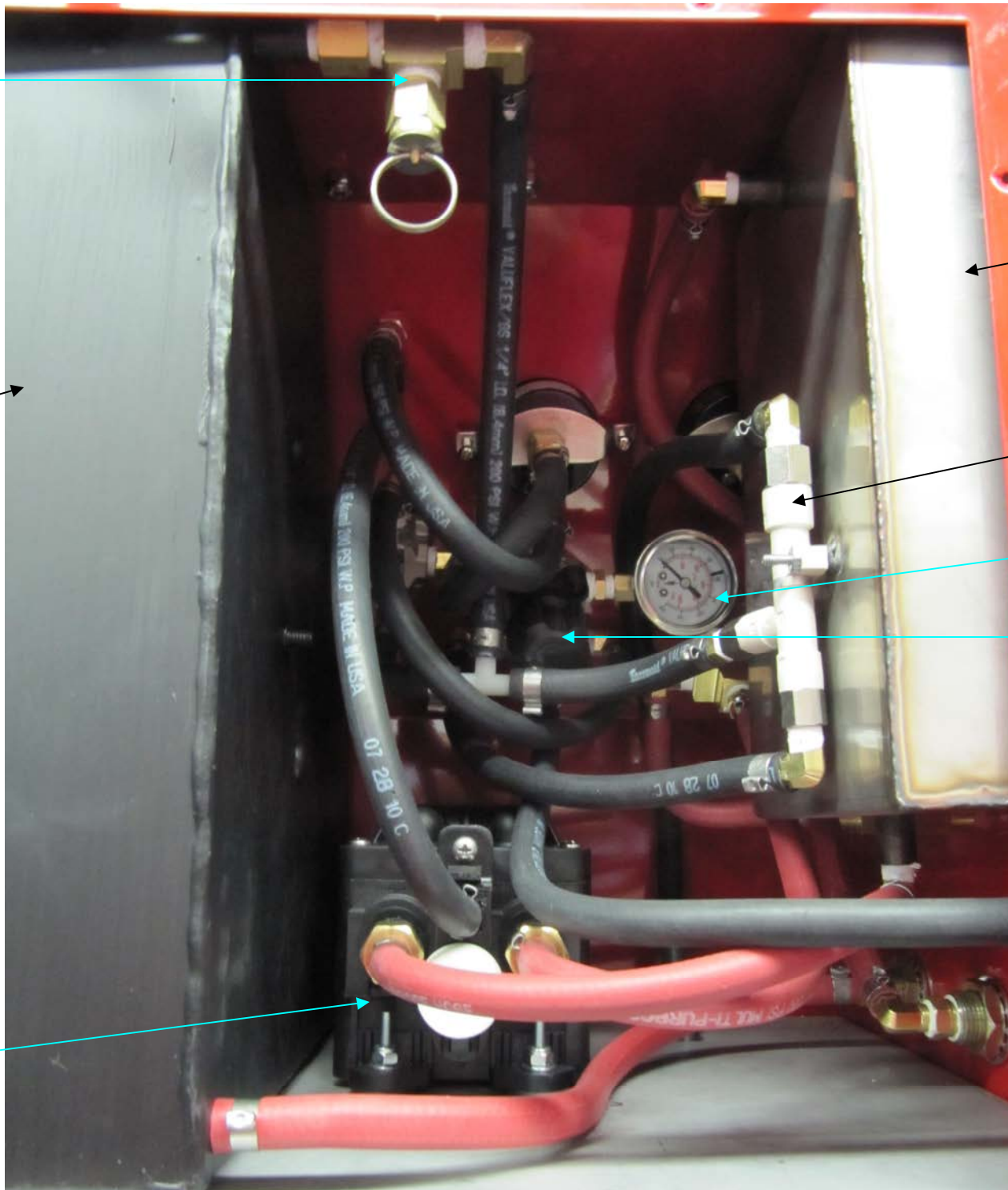
5036

3048

4041

4069

4024





## **BFS 115 Brake Flush Service**

### **Fasteners**

1000 Quadrex Screws for body assembly

### **Hardware**

2015 Rad Cap  
2020 Plastic Hinges  
2021 Door Latch  
2022 Metal Handle  
2023 Red Rim 6" x 1.5" Wheel  
2024 Aluminum Axel  
2025 Steel Wheel Cap  
  
2033 Small Front Caster  
2062 BFS 115 Decal Kit

### **Metal**

3032 Hose Hangers  
3045 BFS 115 Stainless Steel Tray  
3046 BFS 115 Metal Body  
  
3047 Used Fluid Tank - BFS 115  
  
3048 New Fluid Tank - BFS 115

### **Plumbing**

4002 Pressure Relief Valve  
4033 Gauge 2' DIAL 1/4' CBU BR 0 -30 PSI  
4021 Regulator

### **Electrical**

5036 Air Operated Pump - BFS 115

### **Fittings**

6005 Brass 90 deg. Male NPT Hose Barb  
6024 Steel Bulkhead Bushing  
6049 Brass Coupler Female  
6059 Mini Valve  
6063 Brass Coupler Male  
6079 180' Ball Valve  
Air Brake Compression 90' Male NPT  
Connector  
  
6095

### **Assembled Parts**

7076 BFS 115 Black Complete Hose  
Assembly - 16"  
7077 BFS 115 Blue Complete Hose  
Assembly - 16"

4022	Air Regulator
4023	Glass Bowl
4024	Regulator
4041	Vacuum Pump
4042	90' Ball Valve
	3/8" Transparent Nylon Hose - Sight
4044	Tube - BFS
4046	1/4 Black Hose
4046-1	1/4 Blue Hose
4048	Gauge 2" 0-60 psi
4069	Gauge 1/8" 0/160
4109	Toggle Switch