

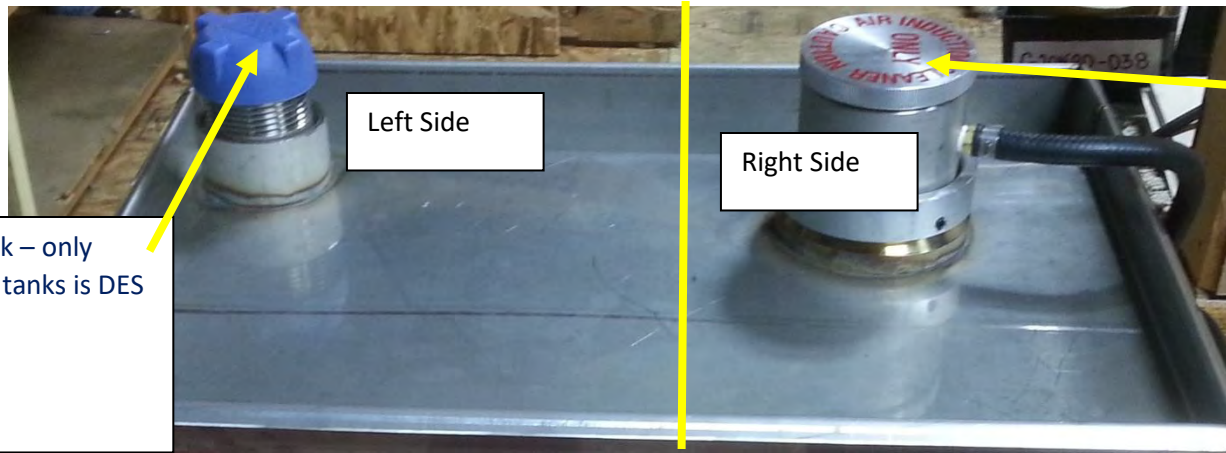
Bus Operation Manual



Call For Tech Support:

1-888-467-4142

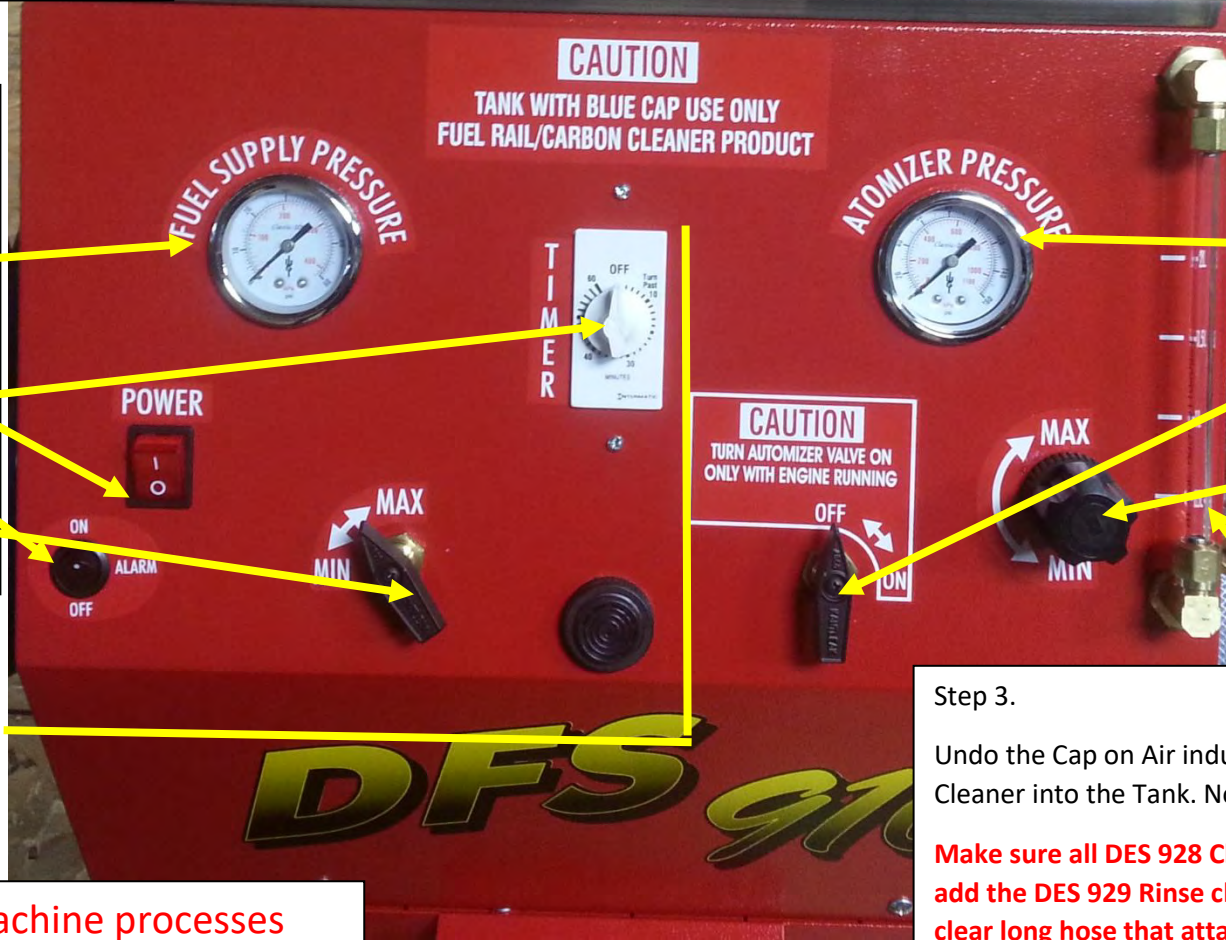
Website: www.kenvo.com



Diesel Carbon Clean Tank – only product that goes in this tanks is DES 925
Pour

Air Induction Tank – DES 928 and DES 929, only chemicals that go in this tank.
****Keep threads and O-Ring greased on cap – Maintenance****

Fuel Injection cleaning you need to use the left side of the machine and following parts:
Fuel Supply Pressure Gauge
Power button
On/Off alarm
Timer
Max/Min
Sight tube on



Step 1.
Right side is for EGR Cleaning and Rinse
Atomizer Pressure Valve – Set 60-80lbs depending on application
Caution On/Off – Turns pressure on the tank
Max/Min – Sets atomizer pressure
Sight tube – Cleaner and Rinse
Step 2

Step 3.
Undo the Cap on Air induction Cap and pour 2-4L of DES 928 Cleaner into the Tank. Now ready for processing
Make sure all DES 928 Cleaner is out of machine before you add the DES 929 Rinse chemical. You will need to check the clear long hose that attaches from the machine to DFS 910-5. Sight tubes don't show the full tank.
Then you will pour 2-4L of DES 929 also in this tank after the EGR cleaning process is done

Step 4. **DFS 910 machine processes MUST have the truck idling every time before you start ***

Cummins Bus



DFS 910-5

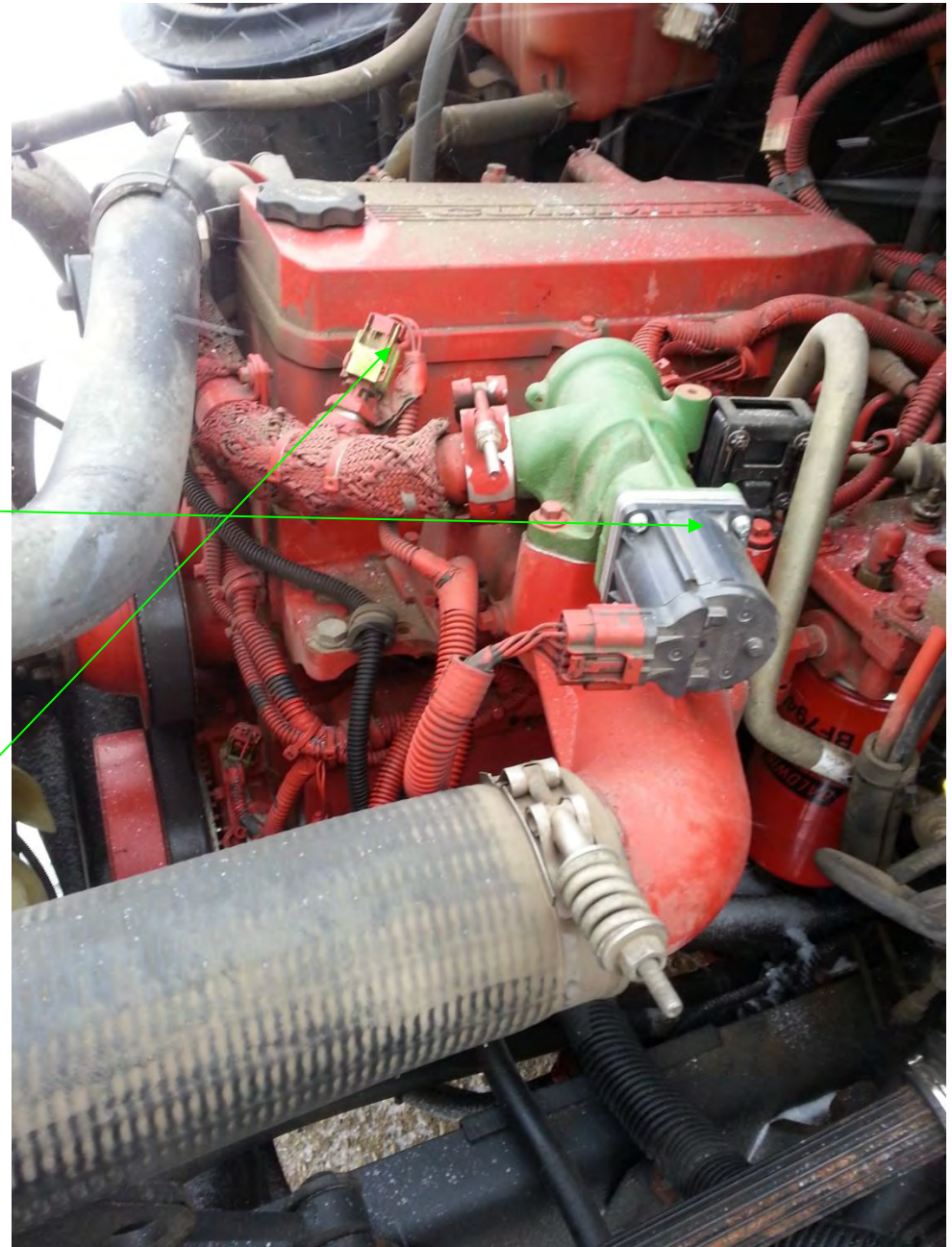


DFS 910-2



DFS 910-9

- Manually open the EGR valve on the engine, remove EGR Motor by removing 4 machine screws.
- Install DFS 910-9 to EGR Valve.
- With thumb screw not pushing the EGR valve, the EGR Valve is closed. Now in Exhaust mode
- Remove the temp sensor and install DFS 910-2
- Install Black and Clear hoses from DFS 910 machine to the DFS 910-5. The Black hose – to the quick connect with ball valve. Install Clear hose – other quick connect.
- Refer to page 3 for machine set up
- Set air Pressure on Atomizer Tank to 80 psi.



- Hook up the Air to DFS 910
- Start Engine
- In exhaust mode turn on air valve of DFS 910-5 and turn on Atomizer valve
- Run 2-4L of product through exhaust side. Run until the red product runs out on the clear hose on the machine.
- Turn atomizer valve off
- Remove atomizer cap on machine and refill machine with 2L of DES 928 Cleaner
- Turn the DFS 910-9 thumb screw until it touches EGR valve and turn it one complete turn. This Allows cleaning process for intake side.
- Turn atomizer valve on
- Run 2-4L of product through the intake side. Run until the red product runs out on the clear hose from the machine.
- Shut atomizer Valve off on machine
- *****CAUTION***Make sure all cleaner is gone out of the tank before putting the rinse into the tank**
- Open atomizer tank and refill tank with 1L DES 929 rinse
- Turn the atomizer valve on
- Run ½ L of rinse through the intake side.
- Turn the thumb screw on DFS 910-9 out
- Run 1/2L of rinse through the exhaust side.
- Make sure all the rinse runs out on the clear hose from the machine.
- Shut engine off
- Disconnect the DFS 910-5 and other fittings from engine
- Take the vehicle for a drive or do a DPF Regen

Electronically to open and close EGR valve

To open EGR valve, plug the temp sensor into its wiring. This allows cleaning for intake mode

To Close EGR valve, disconnect the temp sensor from wiring. This allows cleaning for exhaust mode



International VT 365



DFS 910-5A



DFS 910-1



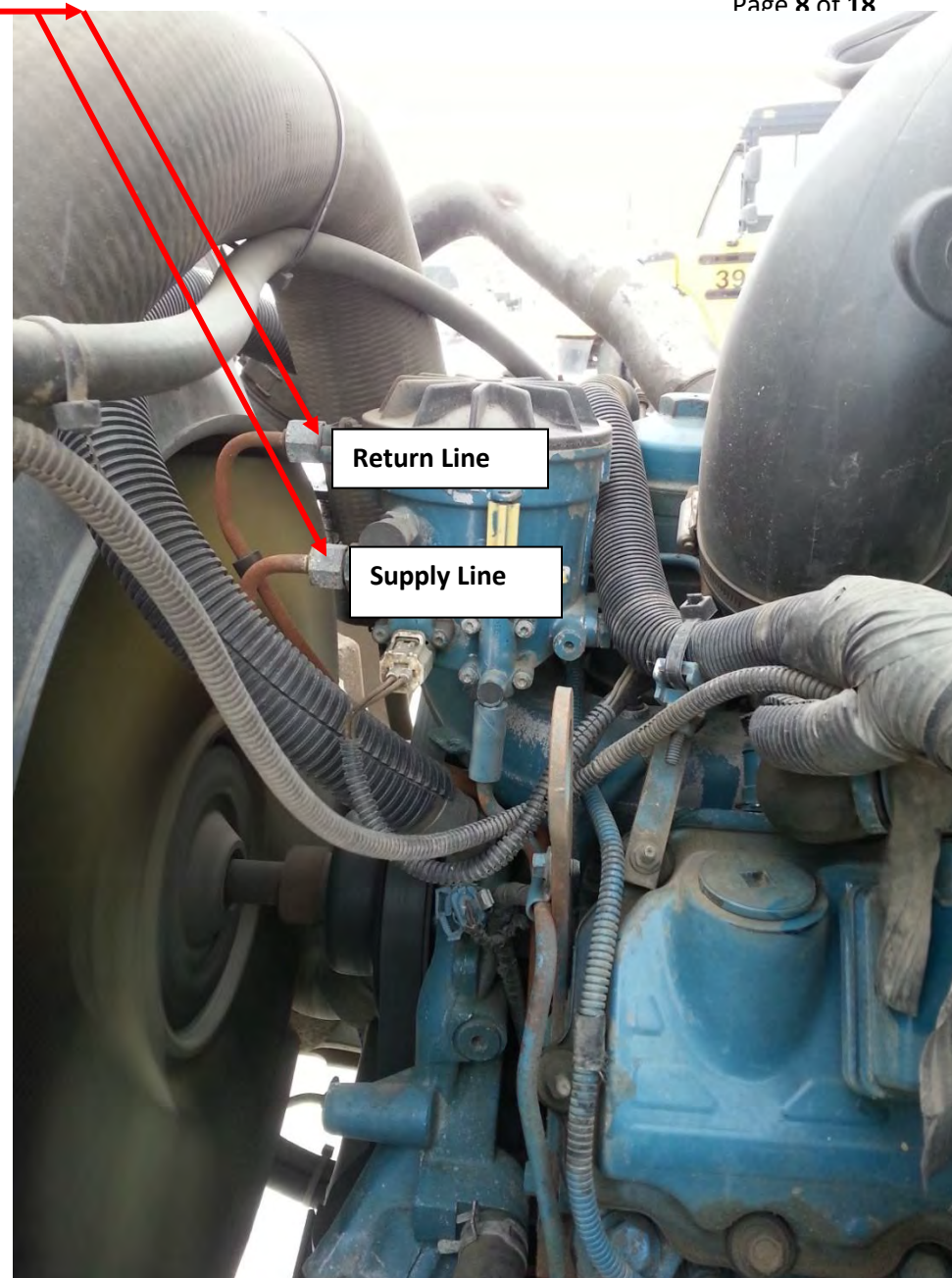
Part# DFS 910-5



- Remove EGR Valve
- Install DFS910-5A to the DFS 910-1
- Install DFS 910-1 into Intake
- Connect the DFS 910-5 to the DFS 910-1, attach the DFS Clear and Black hose to the DFS 910-5
- Refer to page 3 for machine Set Up
- Pour 2L of DES 928 into the atomizer tank.
- Connect the air line to DFS 910 machine.
- Set Air pressure on atomizer to 80 PSI
- **IF DOING INJECTOR CLEANING THEN HOOK UP FUEL LINES AND REFER TO INJECTOR CLEANING PROCESS.**
- Start the engine
- On the DFS 910-1 turn the ball valve to exhaust mode
- Turn the ball valve on DFS 910-5
- Turn on the atomizer valve on the DFS 910 machine
- Run 2-4L of DES 928 through the exhaust side. Look at the clear hose to see when the product is finished.
- Turn off the atomizer valve on DFS 910 machine
- Pour another 2L DES 928 into the tank
- Turn on atomizer valve on DFS 910 machine.
- Run 2-4L of DES 928 until red product runs out on the clear hose on the machine
- Shut off atomizer valve on the DFS 910 machine
- Pour 1L of DES 929 rinse into tank
- Turn on atomizer valve on DFS 910 machine.
- Run 1/2L through intake side and then run 1/2L through exhaust side
- Disconnect machine clear codes and take vehicle for a test drive or do a DFP Regen



- Disconnect fuel lines
- Install Part # 7109 on filter hosing
- Hook up Blue line to Supply and black hose to Return Line
- The lines that are disconnected install Part # 7108 on each end of the open end lines
- Connect Loop hose connecting each of the lines together
- Install Blue hose off the DFS 910 machine to the Supply Line
- Install the Black hose off the DFS 910 machine to the Return Line
- Hook up Battery Clamps to Battery
- Fill up Fuel injection tank with blue cap on it with DES 925 Carbon Clean chemical.
- Turn on pump switch and set pressure to minimum pressure 45-50lbs.
- Now start the engine to do injection cleaning
- If doing EGR cleaning do this process at the same time
- **CAUTION – AT 1L MARK ADD MORE PRODUCT IF NEEDED TO NOT RUN TANK EMPTY**



LOOP



7109 (2)

International Fitting



7108 (2)

International Fitting



DT 466 International





DFS 910-5



7112

Tools You Will Need:

- 21/64 Drill Bit
- 1/8" NPT Tape
- 1/8" Hex Key Plug

- First you need to drill and tape into transfer pipe to EGR Valve.
- Install Adapter #7112 into transfer pipe and hook up # DFS 910-5 to #7112
- Install black and clear hoses from DFS 910 machine to the DFS 910-5. The Black hose – to the quick connect with ball valve. Install Clear hose – other quick connect
- Refer to page 3 for machine set up



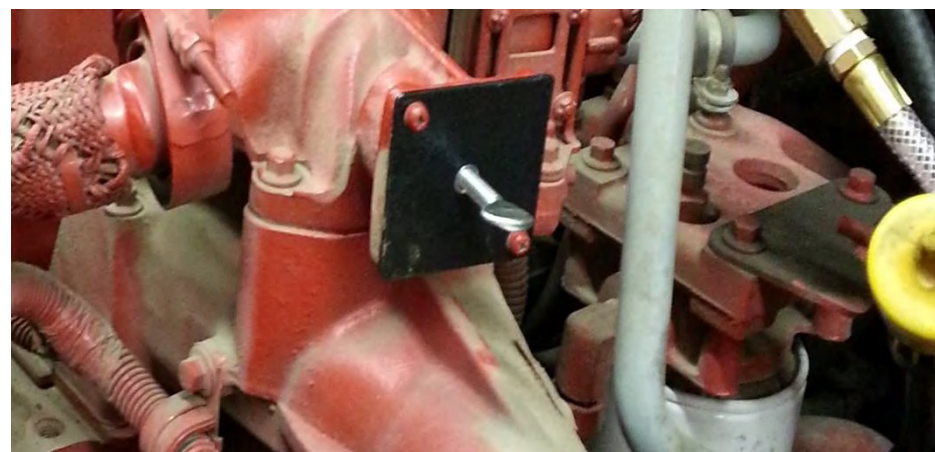
- Manually open the EGR valve on the engine, remove EGR Motor by removing 4 machine screws.
- Install DFS 910-9 to EGR Valve.
- With thumb screw not pushing the EGR valve, the EGR Valve is closed. Now in Exhaust mode



DFS 910-9

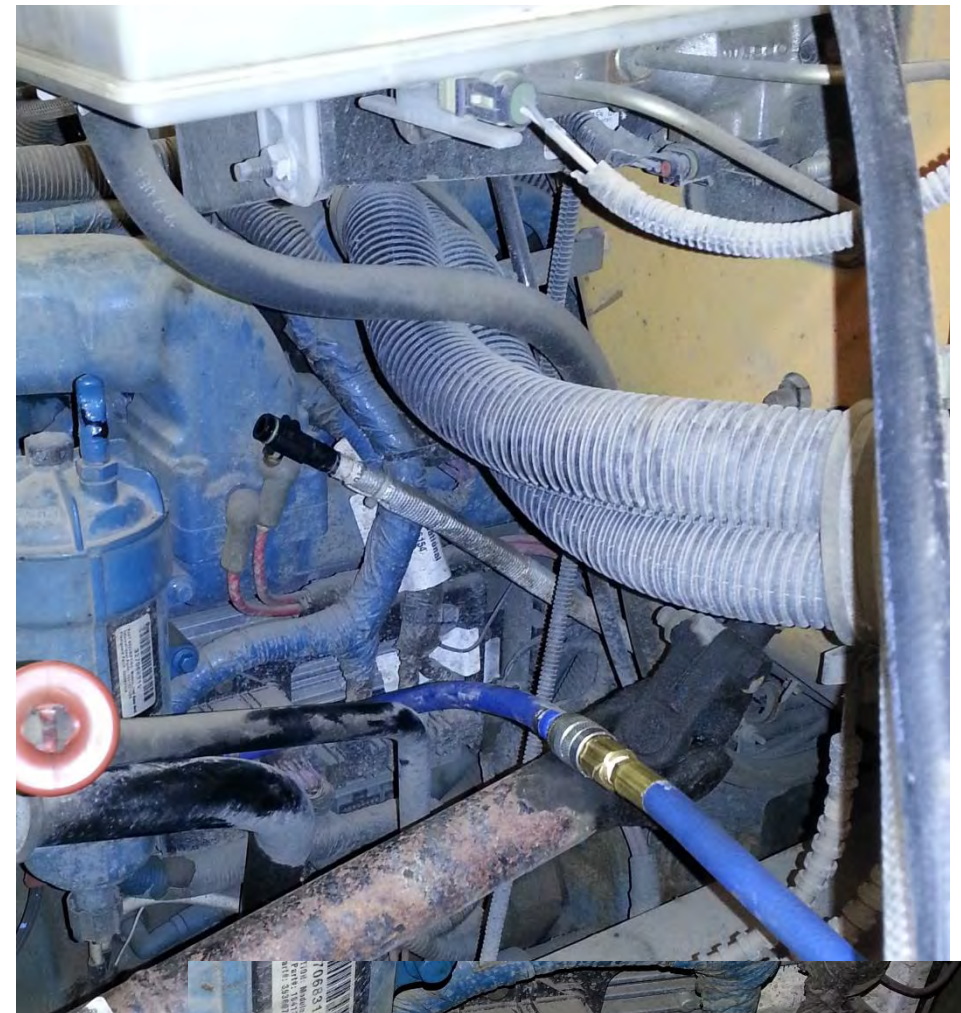


- Hook up the Air to DFS 910
- Start Engine
- In exhaust mode turn on air valve of DFS 910-5 and turn on Atomizer valve
- Run 2-4L of product through exhaust side. Run until the red product runs out on the clear hose on the machine.
- Turn atomizer valve off
- Remove atomizer cap on machine and refill machine with 2L of DES 928 Cleaner
- Turn the DFS 910-9 thumb screw until it touches EGR valve and turn it one complete turn. This Allows cleaning process for intake side.
- Turn atomizer valve on
- Run 2-4L of product through the intake side. Run until the red product runs out on the clear hose from the machine.
- Shut atomizer valve off on machine
- *****CAUTION***Make sure all cleaner is gone out of the tank before putting the rinse into the tank**
- Open atomizer tank and refill tank with 1L DES 929 rinse
- Turn the atomizer valve on
- Run ½ L of rinse through the intake side.
- Turn the thumb screw on DFS 910-9 out
- Run 1/2L of rinse through the exhaust side.
- Make sure all the rinse runs out on the clear hose from the machine.
- Shut engine off



DFS 910-9 connected

- It is recommended to do the fuel injection cleaning and EGR cleaning at the same time.
- Disconnect the fuel line from bottom of fuel filter and hook up the adapter **Part# 7114**
- Hook up Blue supply hose and have minimum pressure.
- Return line is not needed because it returns back to the fuel filter
- Fill the DFS 910 with 2L of the DES 925 product.
- Hook machine to the battery and run the pressure at minimum pressure



Fuel
Adapter
Part # 7114



Max Force 7



DFS 910-5



DFS 910-2

- Remove Temp Sensor
- Install DFS 910-2 as per picture
- Install DFS 910-5 to the DFS 910-2
- Install black and clear hoses from DFS 910 machine to the DFS 910-5. The Black hose – to the quick connect with ball valve. Install Clear hose – other quick connect
- Refer to page 3 for machine set up
- Pour 2L of DES 928 cleaner into atomizer tank with aluminum cap.
- Hook up the air to the DFS 910 machine
- Set Air Pressure to 80 PSI
- Start Engine
- Turn on Ball Valve on DFS 910-5
- Turn atomizer valve on DFS 910 machine.
- Run the full 2L of DES 928 cleaner through the engine until you can no longer see red product going through the DFS 910-5 clear hose
- Turn Atomizer valve off on the machine DFS 910 and pour another 2L of DES 928 cleaner into the atomizer tank
- Disconnect Electrical connection that goes to EGR Valve.
- Now turn atomizer valve on and run 2-4L of DES 928 cleaner through the exhaust side. Until you can no longer see red product going through the DFS 910-5 clear hose.
- Turn the atomizer valve off
- Pour DES 929 rinse in the atomizer tank with aluminum cap
- Turn the atomizer valve back on
- Run 1/2L through the exhaust side and 1/2L through the intake side by connecting the Electrical connection to EGR valve
- Disconnect machine
- Connect the Temp sensor
- Take Vehicle for drive or do a DPF Regen



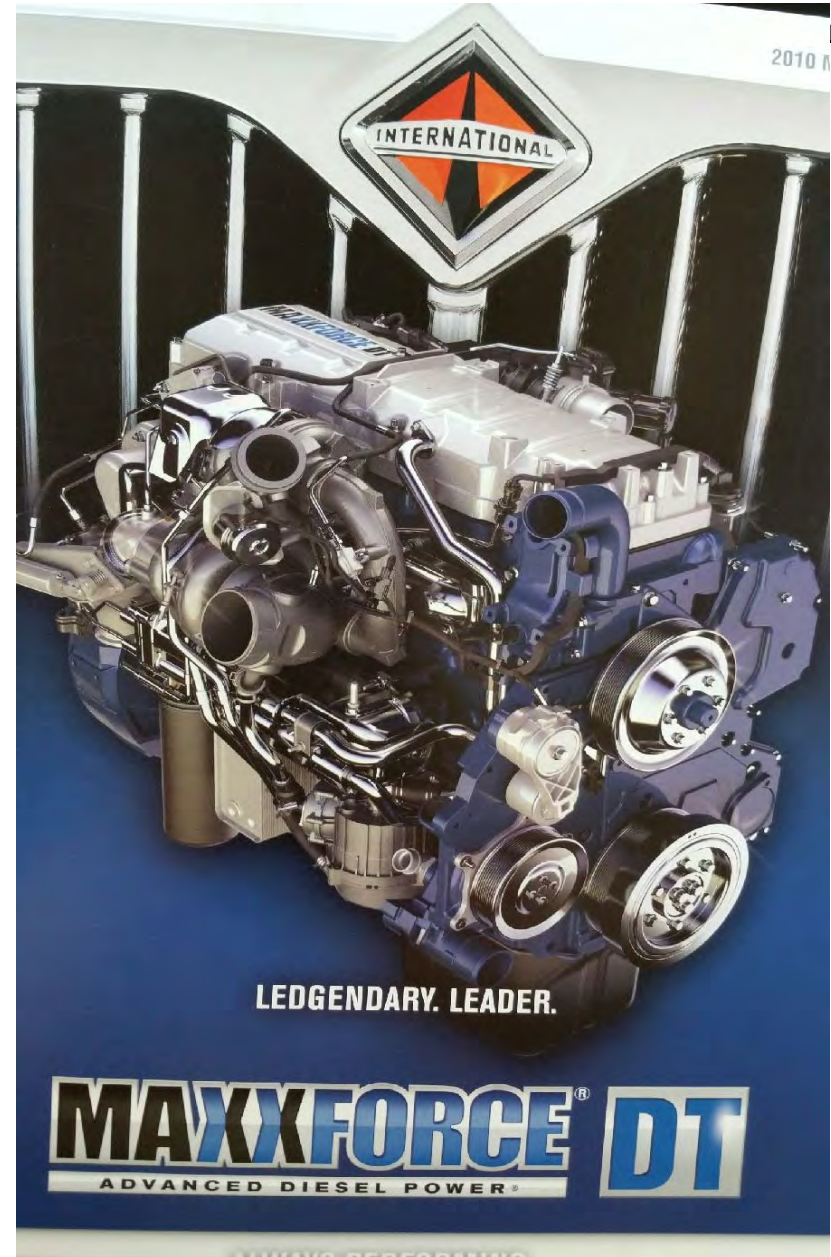
Max Force DT



DFS 910-33



DFS 910-5



- Remove Exhaust Pressure Sensor
- Install DFS 910-33 as per picture
- Install DFS 910-5 to the DFS 910-33
- Install black and clear hoses from DFS 910 machine to the DFS 910-5. The Black hose – to the quick connect with ball valve. Install Clear hose – other quick connect
- Refer to page 3 for machine set up
- Pour 2L of DES 928 cleaner into atomizer tank with aluminum cap.
- Hook up the air to the DFS 910 machine
- Set Air Pressure to 80 PSI
- Start Engine
- Turn on Ball Valve on DFS 910-5
- Turn atomizer valve on DFS 910 machine.
- Run the full 2L of DES 928 through the engine until you can no longer see red product going through the DFS 910-5 clear hose
- Turn Atomizer valve off on the machine DFS 910 and pour another 2L of DES 928 cleaner into the atomizer tank
- Close EGR Valve with Scan Tool or Disconnect Electrical connection that goes to EGR Valve.
- Now turn atomizer valve on and run 2-4L of DES 928 cleaner through the exhaust side. Until you can no longer see red product going through the DFS 910-5 clear hose.
- Turn the atomizer valve off
- Pour DES 929 rinse in the atomizer tank with aluminum cap
- Turn the atomizer valve back on
- Run 1/2L through the exhaust side and 1/2L through the intake side by connecting the Electrical connection to EGR valve
- Disconnect machine
- Connect the Temp sensor
- Take Vehicle for drive or do a DPF Regen



****DFS 910-33 – THIS IS A CLEAR COILED HOSE
NOW INSTEAD OF BLACK****

Call For Tech Support:

1-888-467-4142

Website: www.kenvo.com

Order By Email or Fax

alyssa@kenvo.com

780-447-2799