

# Commercial Truck Operations



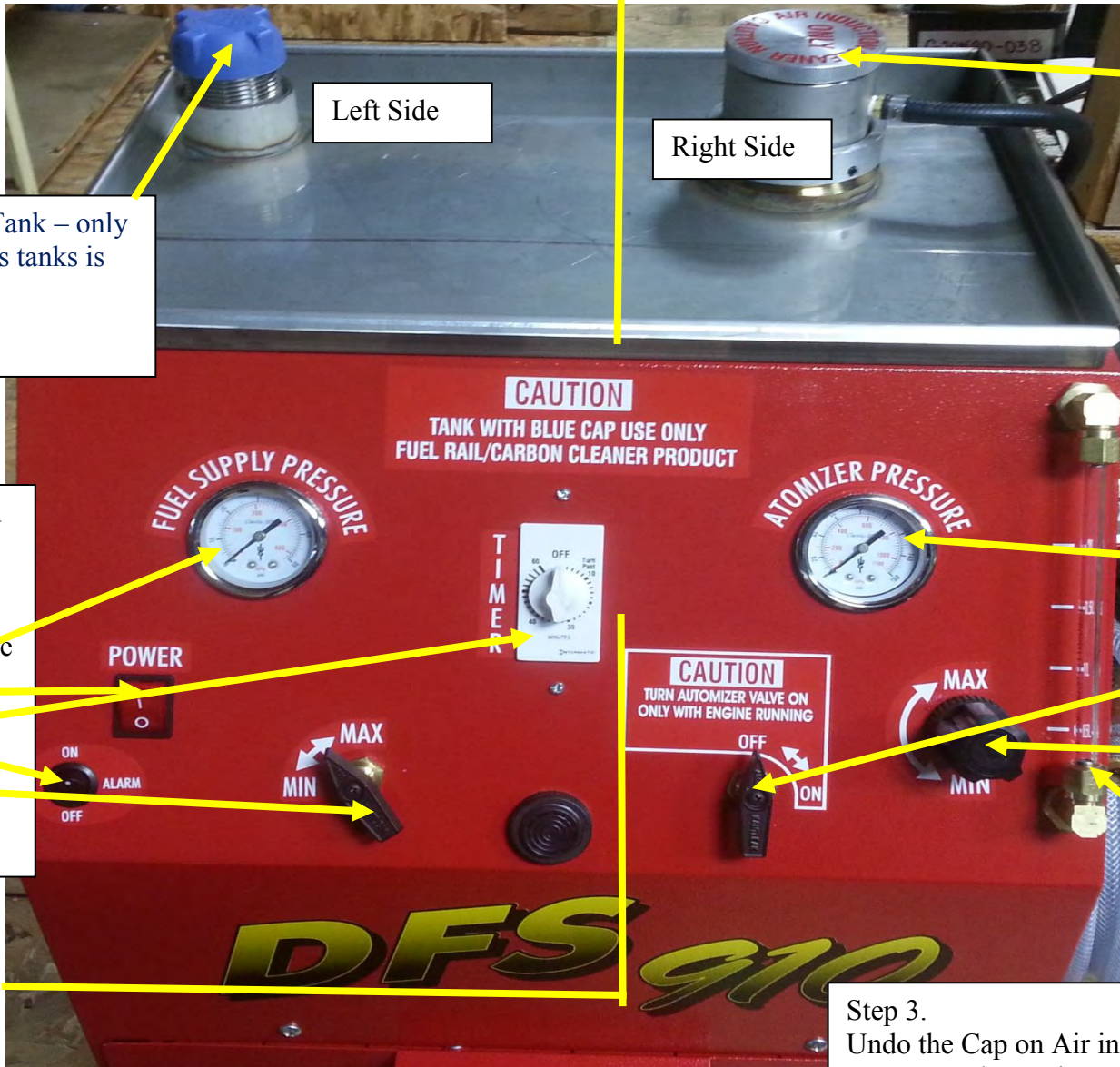
NOTE:  
New Machines will have  
**CLEAR** Hose in place of **BLUE** hose



**Call For Tech Support:**

**1-888-467-4142**

**Website: [www.kenvo.com](http://www.kenvo.com)**



Diesel Carbon Clean Tank – only product that goes in this tanks is DES 925

Left Side

Right Side

Air Induction Tank – DES 928 and DES 929, only chemicals that go in this tank.

**\*\*Keep threads and O-Ring greased on cap – Maintenance\*\***

Fuel Injection cleaning you need to use the left side of the machine and following parts:

- Fuel Supply Pressure Gauge
- Power button
- On/Off alarm
- Timer
- Max/Min
- Sight tube on
- Side on machine

Step 1. Right side is for EGR Cleaning and Rinse Atomizer Pressure Valve – Set 60-80lbs depending on application

- Caution On/Off – Turns pressure on the tank
  - Max/Min – Sets atomizer pressure
  - Sight tube – Cleaner and Rinse
- Step 2  
Connect Shop air to side of

Step 3. Undo the Cap on Air induction Cap and pour 2-4L of DES 928 Cleaner into the Tank. Now ready for processing

**Make sure all DES 928 Cleaner is out of machine before you add the DES 929 Rinse chemical. You will need to check the clear long hose that attaches from the machine to DFS 910-5. Sight tubes don't show the full tank.**

Then you will pour 2-4L of DES 929 also in this tank after the EGR cleaning process is done

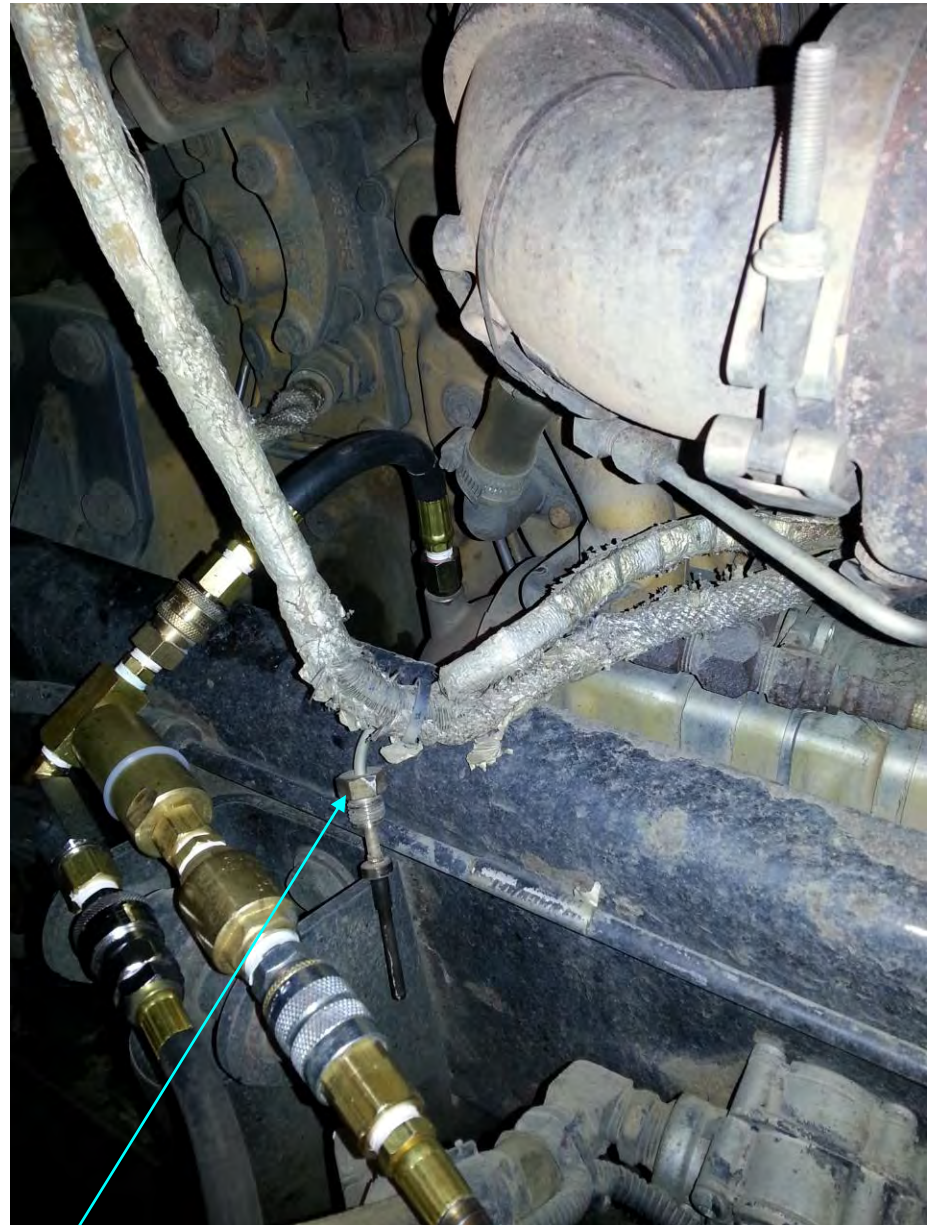
**Step 4. \*\*DFS 910 machine processes MUST have the truck idling every time before you start \*\*\***



# C13 CAT

## EGR Hook up:

- On rear right hand side of motor remove temp sensor.
- Install DFS 910-2. To where temp sensor was removed.
- Refer to page 3 for machine Set Up
- Install Black and Clear hoses from DFS 910 machine to the DFS 910-5. The Black hose – to the quick connect with ball valve. Install Clear hose – other quick connect.
- Start the truck. With computer hooked up to the truck, see if the EGR is opened or closed.
- Set pressure on the induction side of machine to 80 psi.
- With the EGR **open**, run 2-4 liters of DES928 EGR cleaner through the intake side.
- **Close** EGR with computer and run 2-4 Liters of DES928 cleaner through exhaust side.
- Turn the induction side of the DFS 910 to off, add 1L of DES 929 Rinse to the induction side of machine.
- **Open** EGR Run 1L of rinse through the intake. **Close** the EGR and Run 1L of rinse through the exhaust.
- Disconnect adaptor and reinstall temp sensor. Take truck for test drive to remove left over residue out of exhaust system.



Temp Sensor



DFS 910-2

# Cummins ISX14



**DFS 910-5**



**DFS 910-5A**



**DFS 910-19**  
Cummins ISX14  
2007-2010 Adapter

**DFS 910-19-2**  
Cummins ISX14  
2007-2010 Adapter

- Remove tube with temp sensor. You can do this by undoing hose clamp and the 2 bolts on the flange on EGR valve.





- Install DFS 910-19 and DFS 910-19-2 to DFS 910-5A and then install all to the engine
- Install the DFS 910-5 to the DFS 910-5A
- Install Black and Clear hoses from DFS 910 machine to the DFS 910-5. The Black hose – to the quick connect with ball valve. Install Clear hose – other quick connect.
- Refer to page 3 for machine set up
- Set pressure on the induction side to 80psi.
- Start Engine
- With computer hooked up make sure EGR valve is **open**.
- Turn valve on DFS 910-5A to intake
- Run 2L of DES928 EGR cleaner through intake side
- Turn machine to off, add 2L DES928 cleaner.
- Turn the valve on the DFS910-5A to Exhaust and run 2L of DES928 EGR cleaner through the exhaust side.
- Turn machine off add 2L of DES929 rinse.
- Run 1L of DES929 Rinse through intake and 1L rinse through Exhaust side.
- Disconnect DFS 910-19 & DFS 910-19-2 from engine and reinstall exhaust tube.
- Take truck for test drive to remove left over residue out of exhaust system

**\*\*CAUTION ENGINE MUST ALWAYS BE RUNNING THROUGH PROCEDURE\*\***

**YOU MAY NEED TO DOUBLE PRODUCT IF EXHAUST HAS A HEAVY SOOT CONTENT**

# Cummins ISX15



DFS 910-22 (2 pieces)

Left side Motor

1. Remove exhaust tube by unbolting flanges.
2. Install DFS 910-22 to DFS910-5A and attach to where exhaust tube was removed.

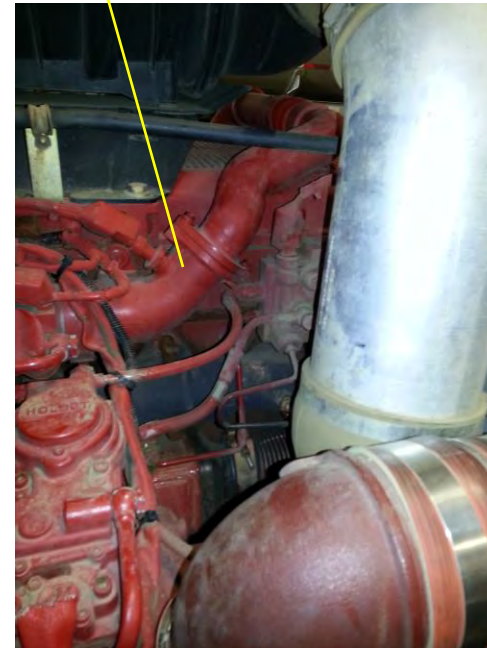
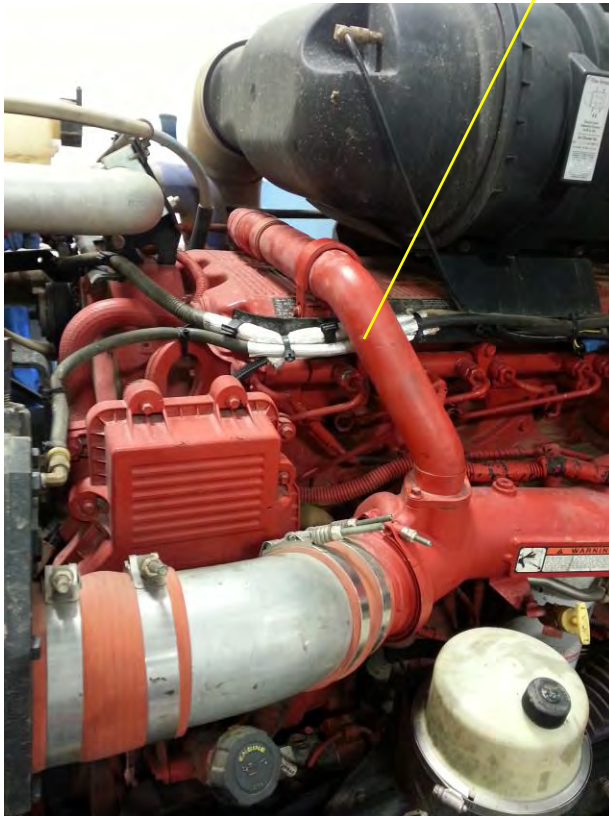


DFS 910-5



DFS 910-5A

Right Side Motor







- Install DFS 910-5 to DFS 910-5A
- Install Black and Clear hoses from DFS 910 machine to the DFS 910-5. The Black hose – to the quick connect with ball valve. Install Clear hose – other quick connect.
- Refer to page 3 for machine set up
- Start the truck, and leave idling.
- With computer hooked up to truck make sure EGR valve is **open**.
- Put 2L of DES928 Cleaner in the induction side of machine. Hook up the air hose
- Set pressure on machine to 80psi.
- Turn valve on DFS 910-5A to intake. Run 2 L of DES928 EGR Cleaner through engine.
- Turn machine off add 2 more liters of DES928 cleaner. Turn valve on the DFS910-5A to exhaust, turn machine on
- Run 2L of DES928 through engine.
- Turn machine off, add 2L of DES929 Rinse to the machine. Turn machine on.
- Run 1L of rinse through intake and 1L through exhaust.
- Remove adaptor, reinstall exhaust tube Take truck for test drive to remove left over residue out of exhaust system

**\*\*CAUTION PROCEDURE MUST BE DONE WITH ENGINE IDLING\*\***

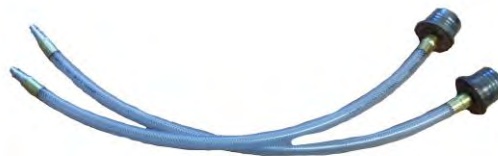
**YOU MAY NEED TO DOUBLE PRODUCT IF EXHAUST HAS A HEAVY SOOT CONTENT**



# Detroit Series 60



DFS 910-5

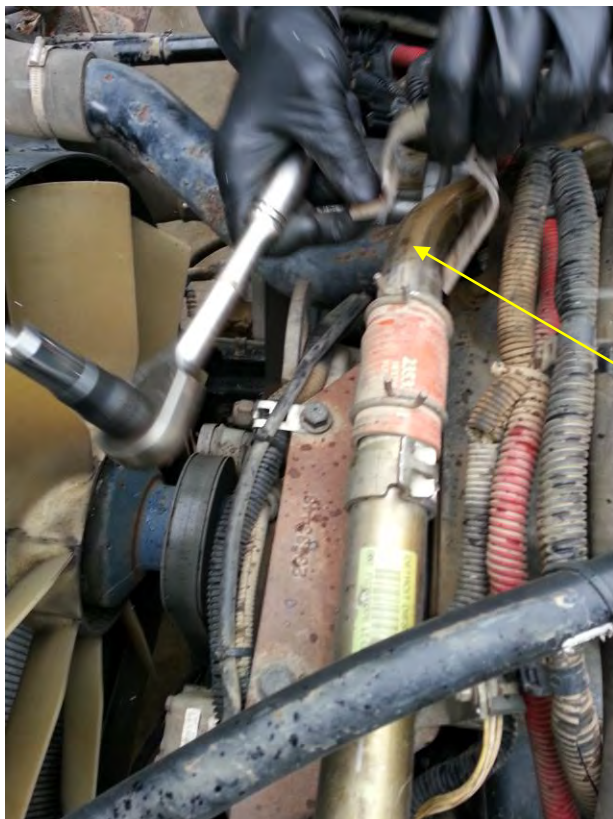


DFS 910-24 (2)  
Detroit Diesel Series 60

DFS 910-5A



DFS 910-24 connected to DFS 910-5A



1. Remove exhaust tube from EGR.
2. Install both DFS 910-24 peices to DFS 910-5A and attach to were exhaust tube was removed.



**Top of Motor**



**Right hand side of Motor**

- Install DFS 910-5 to DFS 910-5A
- Install Black and Clear hoses from DFS 910 machine to the DFS 910-5. The Black hose – to the quick connect with ball valve. Install Clear hose – other quick connect.
- Refer to page 3 for machine set up
- With DFS 910-24 installed start truck, and leave idling.
- With computer hooked up to truck make sure EGR valve is **open**.
- Add 2L of DES928 EGR Cleaner to induction side of machine.
- Hook up air line to machine.
- Set pressure on machine to 80psi.
- Turn valve on DFS910-5A to intake. Turn machine on, Run 2 L of DES928 Cleaner through engine. Turn the valve on the DFS910-5A to off.
- Turn machine off add 2 more liters of DES928 Cleaner.
- Turn the valve on the DFS910-5A to Exhaust, turn machine on. Run 2L of DES928 Cleaner through engine
- Turn machine off, add 2L of DES929 Rinse.
- Run 1L of rinse through intake and 1L through exhaust.
- Disconnect DFS910-24 adaptor. Reinstall exhaust tube. Take truck for test drive to remove left over residue out of exhaust system

**\*\*CAUTION PROCEDURE MUST BE DONE WITH ENGINE IDOLING\*\***  
**YOU MAY NEED TO DOUBLE PRODUCT IF EXHAUST HAS HEAVY SOOT CONTENT**



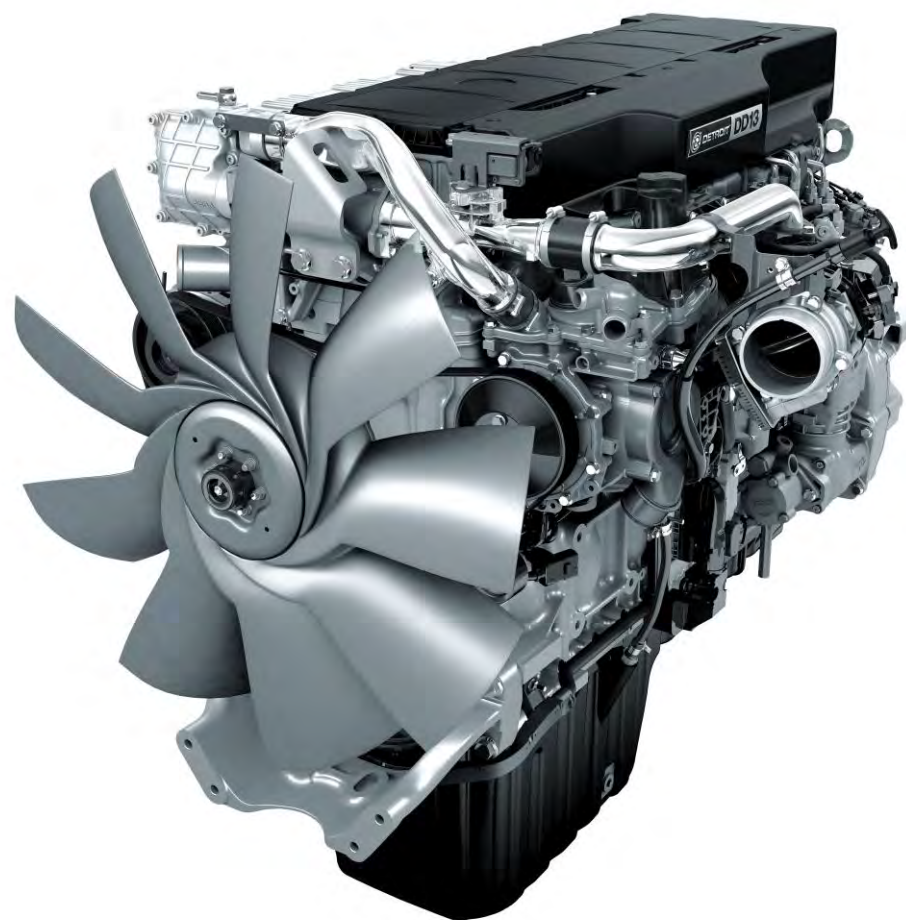
# Detroit DD13/ DD15/DD16



DFS 910-5



DFS 910-5A



Part# **DFS 910-28**  
Detroit DD13,15,16

Part# **DFS 910-M8-2** use with this adapter as well





1. Remove EGR tube from the intake.
2. Install DFS 910-28 & DFS 910-M8-2 to DFS 910-5A then install both ends to where the EGR tube was.
3. Disconnect the rod on EGR valve so you can manually open EGR valve.
4. Open the EGR valve by hand to 20-30%
5. Attach the DFS 910-5 adapter to DFS 910-5A
6. Install Black and clear hoses from DFS 910 machine to the DFS 910-5. The Black hose – to quick connect with ball valve. Install Clear hose – other quick connect
7. Refer to page 3 for machine set up
8. Add 2L of DES928 EGR Cleaner to induction side of machine.
9. Hook up the air line to the machine.
10. Set pressure on machine to 80psi.
11. Turn air valve on DFS 910-5
12. Start engine
13. Turn the valve on DFS 910-5A to Exhaust and Run 2-4L of DES 928 cleaner through the Exhaust side.
14. Once completed turn valve on DFS 910-5A to Intake and Run 2-4L through the Intake side.
15. Pour 1L of DES 929 rinse in machine.
16. Run 1/2L of DES 929 rinse through the Intake side.
17. Once complete turn valve on DFS 910-5A to Exhaust and Run 1/2L through the Exhaust side.
18. Disconnect DFS910-28 & DFS 910-M8-2 adaptors from engine.
19. Reinstall exhaust tube to the engine.
20. Take truck for test drive to remove left over residue out of exhaust system.

**\*\*CAUTION ENGINE MUST ALWAYS BE RUNNING THROUGH PROCEDURE\*\***

**YOU MAY NEED TO DOUBLE PRODUCT IF EXHAUST HAS A HEAVY SOOT CONTENT**





Part# 7070  
5/8" Fuel Fitting



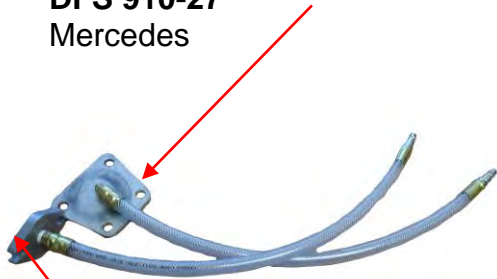
Part # 7071  
1/2" Fuel Fitting

#### Fuel Hook-up

1. Disconnect supply and return lines off engine.
2. Connect Part # 7070 to the 5/8 Supply Line.
3. Connect Part # 7071 to the 1/2 Return Line.
4. Connect blue hose from machine to Part # 7070
5. Connect black hose from machine to Part #7071
6. Pour 4L of DES 925 product in DFS 910 machine.
7. You can do this process while doing the EGR cleaning
8. **While doing this process do not let take run empty.**

# Mercedes MBE 900 Engine

**DFS 910-27**  
Mercedes



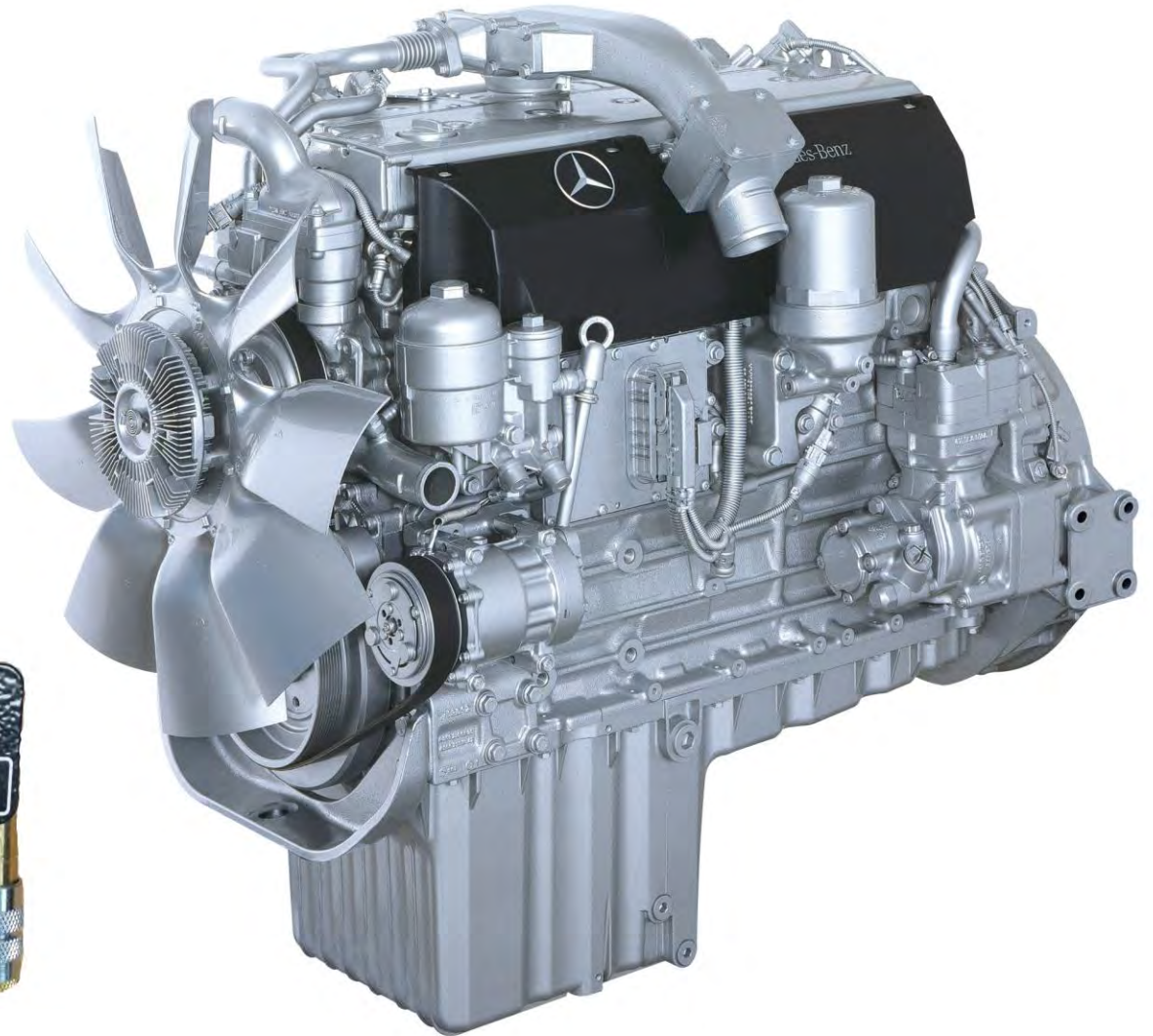
**DFS 910-27-2**  
Mercedes



**DFS 910-5**

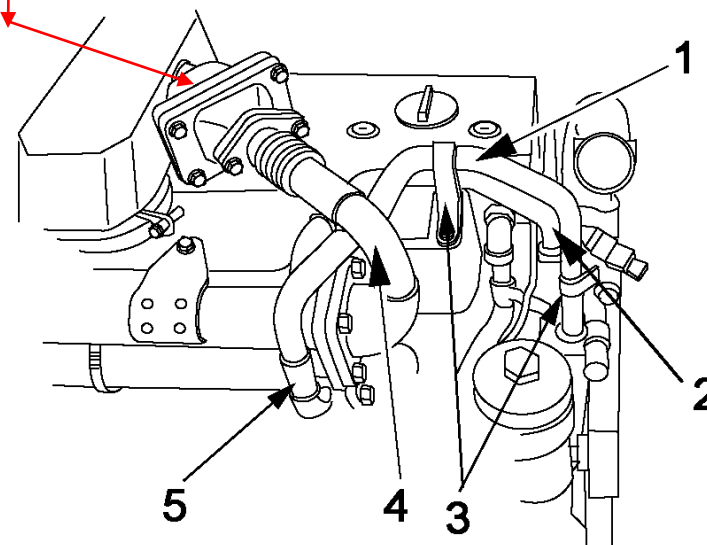
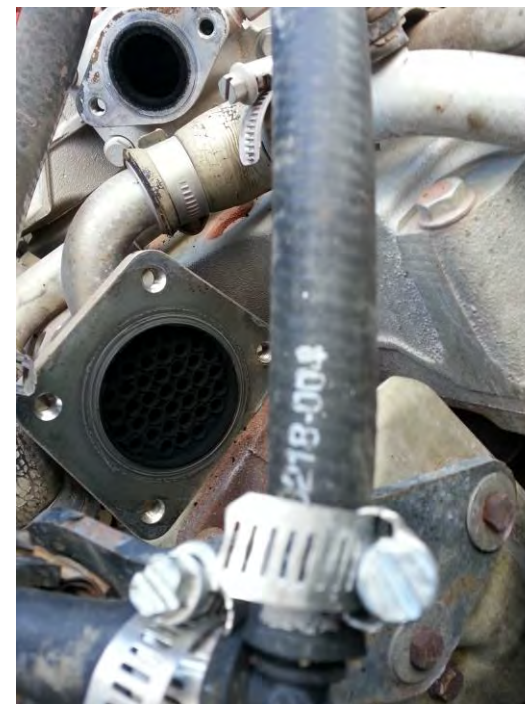


**DFS 910-5A**





- Remove exhaust tube from engine by unbolting flanges.
- Attach DFS 910-27 & DFS 910-27-2 to
- DFS 910-5A then attach to engine where exhaust tube was removed.
- Install Black and Clear hoses from DFS 910 machine to the DFS 910-5. The Black hose – to the quick connect with ball valve. Install Clear hose – other quick connect.
- Refer to page 3 for machine set up
- Start the truck, and leave idling.
- With computer hooked up to truck make sure EGR valve is **open**.
- Put 2L of DES928 Cleaner in the induction side of machine. Hook up the air hose
- Set pressure on machine to 80psi.
- Turn valve on DFS 910-5A to intake. Run 2 L of DES928 EGR Cleaner through engine.
- Turn machine off add 2 more liters of DES928 cleaner. Turn valve on the DFS910-5A to exhaust, turn machine on
- Run 2L of DES928 through engine.
- Turn machine off, add 2L of DES929 Rinse to the machine. Turn machine on.
- Run 1L of rinse through intake and 1L through exhaust.
- Remove adaptors from engine
- Reinstall exhaust tube
- Take truck for test drive to remove left over residue out of exhaust system



**\*\*CAUTION ENGINE MUST ALWAYS BE RUNNING THROUGH PROCEDURE\*\***

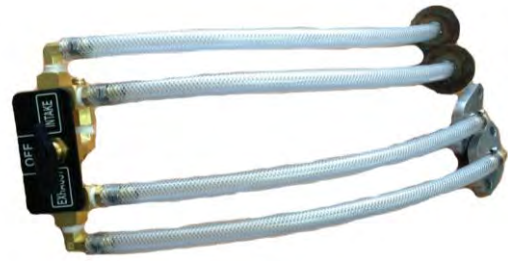
**YOU MAY NEED TO DOUBLE PRODUCT IF EXHAUST HAS A HEAVY SOOT CONTENT**

# International N13 or Maxxforce 13





1. Disconnect exhaust tubes from intake and install the DFS 910-26, as per picture.
2. Install Black and Clear hoses from DFS 910 machine to the DFS 910-5. The Black hose – to the quick connect with ball valve. Install Clear hose – other quick connect.
3. Attach the DFS 910-5 to the DFS 910-26.
4. Turn atomizer valve on DFS 910-5 to on position.
5. Refer to page 3 for machine set up
6. Start the vehicle.
7. Put 2-4L of DES928 Cleaner in the induction side of machine. Hook up the air hose.
8. Set pressure on machine to 80psi.
9. Turn valve on DFS 910-26 to intake. Run 2-4L of DES928 EGR Cleaner through intake.
10. Turn machine off add 2-4 more liters of DES928 cleaner. Turn valve on the DFS910-26 to exhaust, turn machine on.
11. Run 2-4L of DES928 through exhaust.
12. Turn machine off, add 1L of DES929 Rinse to the machine. Turn machine on.
13. Run 1/2L of rinse through intake and 1/2L through exhaust.
14. Remove adaptors from engine.
15. Reinstall exhaust tubes.
16. Take truck for test drive to remove left over residue out of exhaust system.



**DFS 910-26**



**DFS 910-5**

# Volvo 13 & Mac M7





1. Remove the exhaust 90 degree fitting from the front of EGR cooler.
2. Attach the DFS 910-M8-1 to the Tube going up to the intake, remove the existing rubber gasket and use with fitting. Attach the DFS 910-M8-3 to the EGR exhaust cooler.
3. Attach the adapters to DFS 910-5A, the DFS 910-M8-1 to the Intake side , the DFS 910-M8-3 to the Exhaust side
4. Install Black and Clear hoses from DFS 910 machine to the DFS 910-5. The Black hose – to the quick connect with ball valve. Install Clear hose – other quick connect
5. Attach the DFS 910-5 to the DFS 910-5A
6. Turn atomizer valve on DFS 910-5 to on position.
7. Refer to page 3 for machine set up
8. Start the Vehicle
9. Put 2-4L of DES928 Cleaner in the induction side of machine. Hook up the air hose.
10. Set pressure on machine to 80psi.
11. Turn valve on DFS 910-5A to intake. Run 2-4L through the intake side
12. Turn machine off add 2-4 more liters of DES928 cleaner. Turn valve on the DFS910-5A to exhaust, turn machine on.

**NOTE – EGR Valve will be open if the engine is at operating temperature 180-190 degrees. Sometimes this requires to bring the vehicle up to 1100 RMP.**

13. Run 2-4L of DES928 through exhaust
14. Turn machine off, add 1L of DES929 Rinse to the machine. Turn machine on.
15. Run 1/2L of rinse through intake and 1/2L through exhaust.
16. Remove adaptors from engine
17. Reinstall exhaust tube
18. Take truck for test drive to remove left over residue out of exhaust system.



**DFS 910-5**



**DFS 910-5A**



**DFS 910-M8-1**



**DFS 910-M8-3**

# Mac MP 7/8/10 Engines





1. Remove the exhaust 90 degree fitting from the front of Intake.
2. Attach the DFS 910-32 to the Tube going up to the intake. Attach the DFS 910-M8-3 to the EGR exhaust pipe.
3. Attach the adapters to DFS 910-5A, the DFS 910-32 to the Intake side, the DFS 910-M8-3 to the Exhaust side
4. Install Black and Clear hoses from DFS 910 machine to the DFS 910-5. The Black hose – to the quick connect with ball valve. Install Clear hose – other quick connect
5. Attach the DFS 910-5 to the DFS 910-5A
6. Turn atomizer valve on DFS 910-5 to on position.
7. Refer to page 3 for machine set up
8. Start the Vehicle
9. Put 2-4L of DES928 Cleaner in the induction side of machine. Hook up the air hose.
10. Set pressure on machine to 80psi.
11. Turn valve on DFS 910-5A to intake. Run 2-4L through the intake side
12. Turn machine off add 2-4 more liters of DES928 cleaner. Turn valve on the DFS910-5A to exhaust, turn machine on.

**NOTE – EGR Valve will be open if the engine is at operating temperature 180-190 degrees. Sometimes this requires to bring the vehicle up to 1100 RMP.**

13. Run 2-4L of DES928 through exhaust
14. Turn machine off, add 1L of DES929 Rinse to the machine. Turn machine on.
15. Run 1/2L of rinse through intake and 1/2L through exhaust.
16. Remove adaptors from engine
17. Reinstall exhaust tube
18. Take truck for test drive to remove left over residue out of exhaust system.



**DFS 910-5A**



**DFS 910-32**



**DFS 910-M8-3**



**DFS 910-5**

**Call for Tech Support:**  
**1-888-467-4142**  
**Website: [www.kenvo.com](http://www.kenvo.com)**